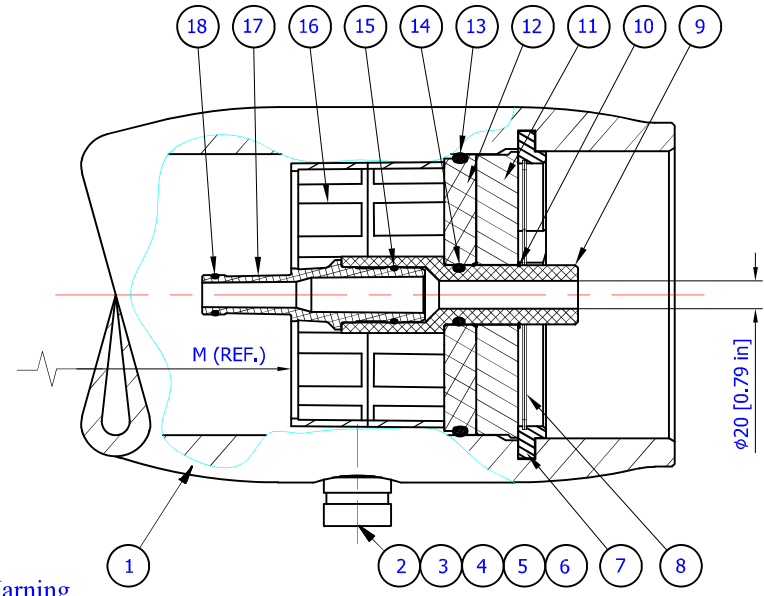


- Notes:
- All dimensions are for reference only, not for construction unless certified.**
 - Item 19 & 20 should be located on feed side.
 - Drawing unit: mm. (inches)
 - Saddles can be shimmed if required.
 - Do not scale drawing, may be reprinted on any paper size or copied.
 - Length between ports (P) can be changed to adapt old dimension with customer's special request.**
 - The vessel is supplied with two strap assembly.**
 - Storage & installation: Indoor.
 - For tolerances & sizes, please check the drawing in page 2.**

This drawing is an integral part of the general statement of use and Technical Manual

| Shell length code | L (l.o.a.) | | P, port to port | S# (span) | M, mm/in length for membranes elements | W weight | Article number |
|-------------------|------------|----------|-----------------|-----------|--|----------|----------------|
| | mm. inch | mm. inch | mm. inch | mm. inch | kg. lb. | | |
| 1 | 1704 | 1194 | 500 | 1032 | 95.0 | 811800-1 | |
| | 67.1 | 47 | 20 | 40.6 | 209.5 | | |
| 2 | 2720 | 2210 | 1500 | 2048 | 119.8 | 811800-2 | |
| | 107.1 | 87 | 59 | 80.6 | 264.3 | | |
| 3 | 3736 | 3226 | 2500 | 3064 | 144.7 | 811800-3 | |
| | 147.1 | 127 | 98 | 120.6 | 319.0 | | |
| 4 | 4752 | 4242 | 3250 | 4080 | 169.5 | 811800-4 | |
| | 187.1 | 167 | 128 | 160.6 | 373.7 | | |
| 5 | 5768 | 5258 | 4250 | 5096 | 194.3 | 811800-5 | |
| | 227.1 | 207 | 167 | 200.6 | 428.5 | | |
| 6 | 6784 | 6274 | 5250 | 6112 | 219.1 | 811800-6 | |
| | 267.1 | 247 | 207 | 240.6 | 483.2 | | |
| 7 | 7800 | 7290 | 6250 | 7128 | 244.0 | 811800-7 | |
| | 307.1 | 287 | 246 | 280.6 | 537.9 | | |
| 8 | 8816 | 8306 | 7250 | 8144 | 268.8 | 811800-8 | |
| | 347.1 | 327 | 285 | 320.6 | 592.6 | | |



Warning.

- Never pressurize a pressure vessel that was not loaded with membrane elements.
- Wrong manifolding may cause an excessive load on port what can lead to leaks.
- Max. allowable working pressure not to exceed 1800 psi. (124,1 bar).
- Permeate internal pressure not to exceed 125 psi. (8.6 bar).
- Operating temperature not to exceed 49°C (120°F).

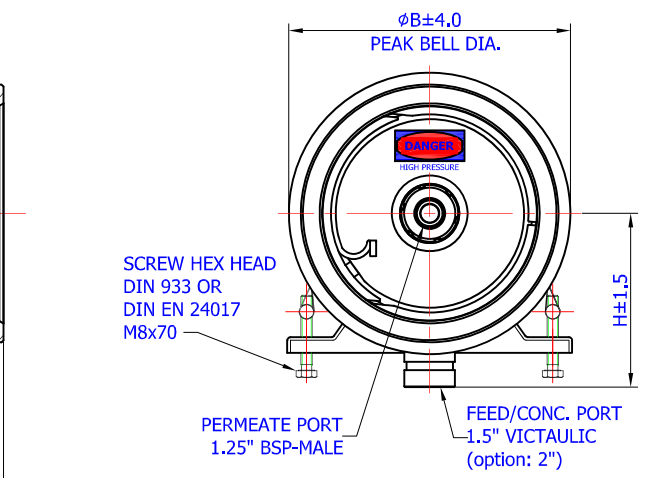
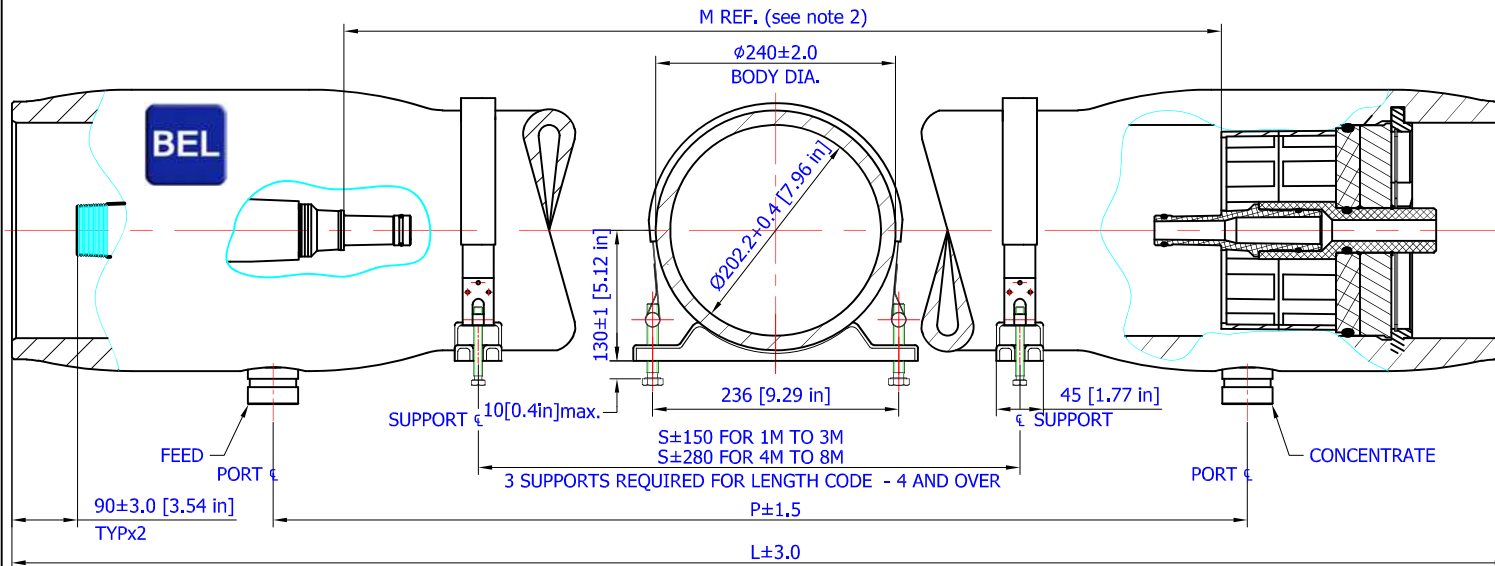
| Item | Q-ty | Part Number | Description | Material |
|------|------|--------------|----------------------------------|---------------------|
| 1 | 1 | 818000-0 | Body of Pressure Vessel | Glass/Epoxy |
| 2 | 2 | 040-155-1800 | F/C port 1.5" | Super duplex |
| 3 | 2 | 006-156-1806 | Disk for sideport | Stainless steel |
| 4 | 2 | 014-150-0506 | Seal for sideport | EPDM |
| 5 | 2 | 011-150-1803 | Retaining ring for SP | Stainless steel |
| 6 | 2 | 011-150-1202 | Retaining ring for SP | Stainless steel |
| 7 | 2 | 005-816-1800 | Support ring | Stainless steel |
| 8 | 2 | 011-801-1202 | Retaining ring (finger hook) | Stainless steel |
| 9 | 2 | 008-811-0125 | Permeate port 1.25" BSP male | Engineering plastic |
| 10 | 2 | 283772336 | Retaining ring for permeate port | Stainless steel |
| 11 | 2 | 003-861-1205 | Base plate | Aluminum |
| 12 | 2 | 013-800-1205 | Sealing plate | Engineering plastic |
| 13 | 2 | 007-080-0092 | Seal for sealing plate | EPDM |
| 14 | 2 | 283776342 | Seal for permeate port | EPDM |
| 15 | 2 | 285773918 | Seal for adapter | EPDM |
| 16 | 1 | 004-830-0150 | Thrust ring | Engineering plastic |
| 17 | 2 | As required | Adapter | Engineering plastic |
| 18 | 2-4 | As required | Seal for adapter | EPDM |
| 19 | 0-3 | 285779231 | Disk spacer - 1mm | Engineering plastic |
| 20 | 0-7 | 285779233 | Disk spacer - 3mm | Engineering plastic |
| 21 | 2 | 55410310 | Strap Assy. | Stainless steel |
| 22 | 2-3 | 55410351 | Saddle | Engineering plastic |

BEL TITLE: BEL8-S-1800 psi. (non code) RO PRESSURE VESSEL

DESIGN: DMG 12/07/2019
 CHECK: JMEP 12/07/2019
 APPR.: MAF 12/07/2019

DRAWING NO: BEL8-S(1.5")-1800

THIS DRAWING IS PROPERTY OF BEL GROUP LIMITED IT IS STRICTLY FORBIDDEN TO USE, COPY, REPRODUCE OR DISCLOSE ANY PART OF IT TO THIRD PARTY WITHOUT WRITTEN AUTHORIZATION. REV.: 1



Notes:

1. All dimensions are for reference only, not for construction unless certified.
2. For membranes shimming (if needed) use disks spacers on feed side of the vessels.
3. Drawing unit: mm. (inches)
4. Saddles can be shimmed if required.
5. Do not scale drawing, may be reprinted on any paper size or copied.
6. The vessel is supplied with two strap assembly.
7. Ports with special height (H) in vessel and Length between ports (P) can be changed to adapt old dimension - with customer's special request.
8. Storage & installation: Indoor.

| Membranes quantity | Length between ports, supports & internal space for membranes elements, mm./inch | | | | | | | |
|-----------------------|--|------|-------|-------|-------|-------|-------|-------|
| | 1 | 2 | 3 | 4 | 5 | 6 | 7 | 8 |
| P, port to port | 1194 | 2210 | 3226 | 4242 | 5258 | 6274 | 7290 | 8306 |
| | 47 | 87 | 127 | 167 | 207 | 247 | 287 | 327 |
| S, supports span | 500 | 1500 | 2500 | 3250 | 4250 | 5250 | 6250 | 7250 |
| | 19.7 | 59.1 | 98.4 | 128 | 167.3 | 206.7 | 246.1 | 285.4 |
| M, space of membranes | 1032 | 2048 | 3064 | 4080 | 5096 | 6112 | 7128 | 8144 |
| | 40.6 | 80.6 | 120.6 | 160.6 | 200.6 | 240.6 | 280.6 | 320.6 |

| B (Peak bell diameter), mm./inch | | |
|----------------------------------|-------|-------|
| Side port dia. | 1.5" | 2" |
| 1800 (124.1) | 298 | 308 |
| | 11,73 | 12,13 |

| Membranes quantity | L (Length of pressure vessels), mm./inch | | | | | | | |
|--------------------|--|-------|-------|-------|-------|-------|-------|-------|
| | 1 | 2 | 3 | 4 | 5 | 6 | 7 | 8 |
| 1800 (124.1) | 1704 | 2720 | 3736 | 4752 | 5768 | 6784 | 7800 | 8816 |
| | 67.1 | 107.1 | 147.1 | 187.1 | 227.1 | 267.1 | 307.1 | 347.1 |

| H (Height of side port), mm./inch | | |
|-----------------------------------|------|------|
| Side port dia. | 1.5" | 2" |
| 1800 (124.1) | 192 | 192 |
| | 7,56 | 7,56 |

Warning.

1. Never pressurize a pressure vessel that was not loaded with membrane elements.
2. Wrong manifolding may cause an excessive load on port what can lead to leaks.
3. Max. allowable working pressure not to exceed 1800 psi. (124.1 bar).
4. Permeate internal pressure not to exceed 125 psi. (8.6 bar).
5. Operating temperature not to exceed 49°C (120°F).

| | | | | | |
|---|----------------|--------------------------------------|--------|------|------------|
| | TITLE | BEL 8" Side Port 1800 PSI (non code) | DESIGN | DMG | 12/07/2019 |
| | | RO PRESSURE VESSEL | CHECK | JMEP | 12/07/2019 |
| DRAWING NO. | BEL8-S-PV-1800 | | APPR. | MAF | 12/07/2019 |
| THIS DRAWING IS PROPERTY OF BEL GROUP LIMITED IT IS STRICTLY FORBIDDEN TO USE, COPY, REPRODUCE OR DISCLOSE ANY PART OF IT TO THIRD PARTY WITHOUT WRITTEN AUTHORIZATION. | | | | | REV.: 1 |



ORDER / R.F.Q. FORM - 8" SIDE PORT PRESSURE VESSELS

Please fill and send it to your contact at BEL

P.O. / R.F.Q. Number:

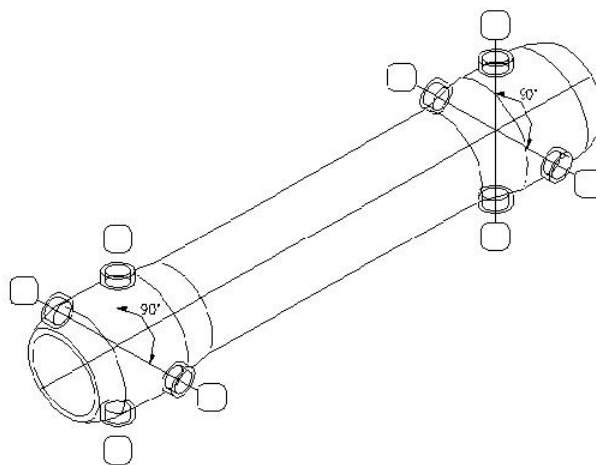
Customer name:

1. NEW SYSTEM / EXISTING SYSTEM or Replacement , please provide details:

2. F/C PORTS CONFIGURATION: Please indicate side port requirement on each side of the vessel
(Mark the letter indicating port diameter in the box at each required port location)

A – 1.5"

B – 2"



3. NUMBER OF VESSELS: Units

(Please use separate forms for each type in case of multi-type orders)

4. WORKING PRESSURE RATE (PSI):1800

5. NUMBER OF MEMBRANE ELEMENTS IN EACH VESSEL: (1,,,,,,8)

6. MEMBRANE BRAND AND TYPE:

7. CONFIRM TYPE: BEL8-S - (x) - - M
of ports dia. of port pressure # of membranes - (Example: BEL8 - S(2 x 1.5") – 1,800 - 7M)

8. PERMEATE PORTS OUTLET: 1.25" BSP male

9. ADAPTERS OPTIONS: Two Standard adapters Standard & Solid (blind) adapter

10. COLOR: Standard (white, RAL 9010) Other RAL number: (contact for pricing)

Customer signature:

Date:

FOR DETAILS PLEASE VISIT OUR WEBSITE: www.belvessels.com

Oct,2019