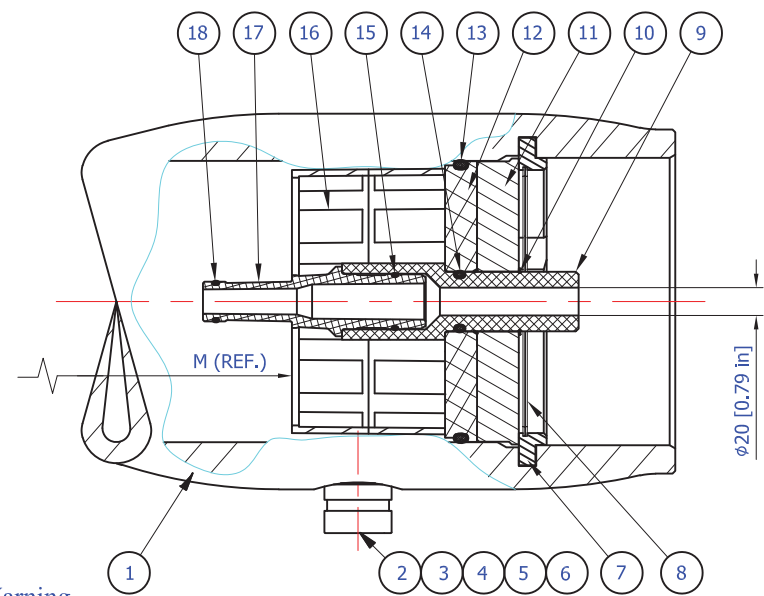


- Notes:
- All dimensions are for reference only, not for construction unless certified.
  - Item 19 & 20 should be located on feed side.
  - Drawing unit: mm. (inches)
  - Saddles can be shimmed if required.
  - Do not scale drawing, may be reprinted on any paper size or copied.
  - Length between ports (P) can be changed to adapt old dimension with customer's special request.
  - The vessel is supplied with two strap assembly.
  - Storage & installation: Indoor.
  - For tolerances & sizes, please check the drawing in page 2.
  - Vessel's Port diameters, according to ANSI Standards.

This drawing is an integral part of the general statement of use and Technical Manual

Shell length code	L (l.o.a.) mm. inch	P, port to port mm. inch	S# (span) mm. inch	M, mm/in length for membranes elements	W weight kg. lb.	Article number
1	1704	1194	500	1032	95.0	811800-1
	67.1	47	20	40.6	209.5	
2	2720	2210	1500	2048	119.8	811800-2
	107.1	87	59	80.6	264.3	
3	3736	3226	2500	3064	144.7	811800-3
	147.1	127	98	120.6	319.0	
4	4752	4242	3250	4080	169.5	811800-4
	187.1	167	128	160.6	373.7	
5	5768	5258	4250	5096	194.3	811800-5
	227.1	207	167	200.6	428.5	
6	6784	6274	5250	6112	219.1	811800-6
	267.1	247	207	240.6	483.2	
7	7800	7290	6250	7128	244.0	811800-7
	307.1	287	246	280.6	537.9	
8	8816	8306	7250	8144	268.8	811800-8
	347.1	327	285	320.6	592.6	



Warning.

- Never pressurize a pressure vessel that was not loaded with membrane elements.
- Wrong manifolding may cause an excessive load on port what can lead to leaks.
- Max. allowable working pressure not to exceed 1800 psi. (124,1 bar).
- Permeate internal pressure not to exceed 125 psi. (8.6 bar).
- Operating temperature not to exceed 65°C (150°F).

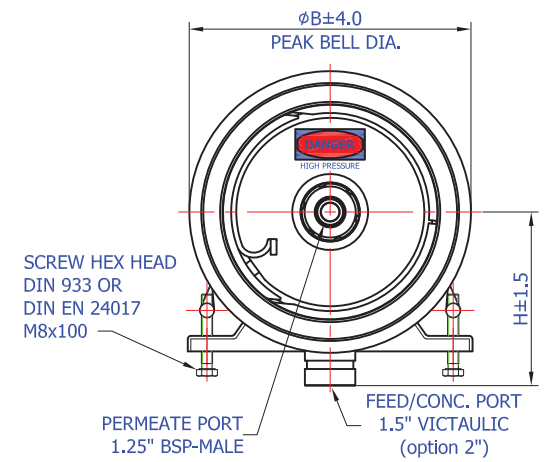
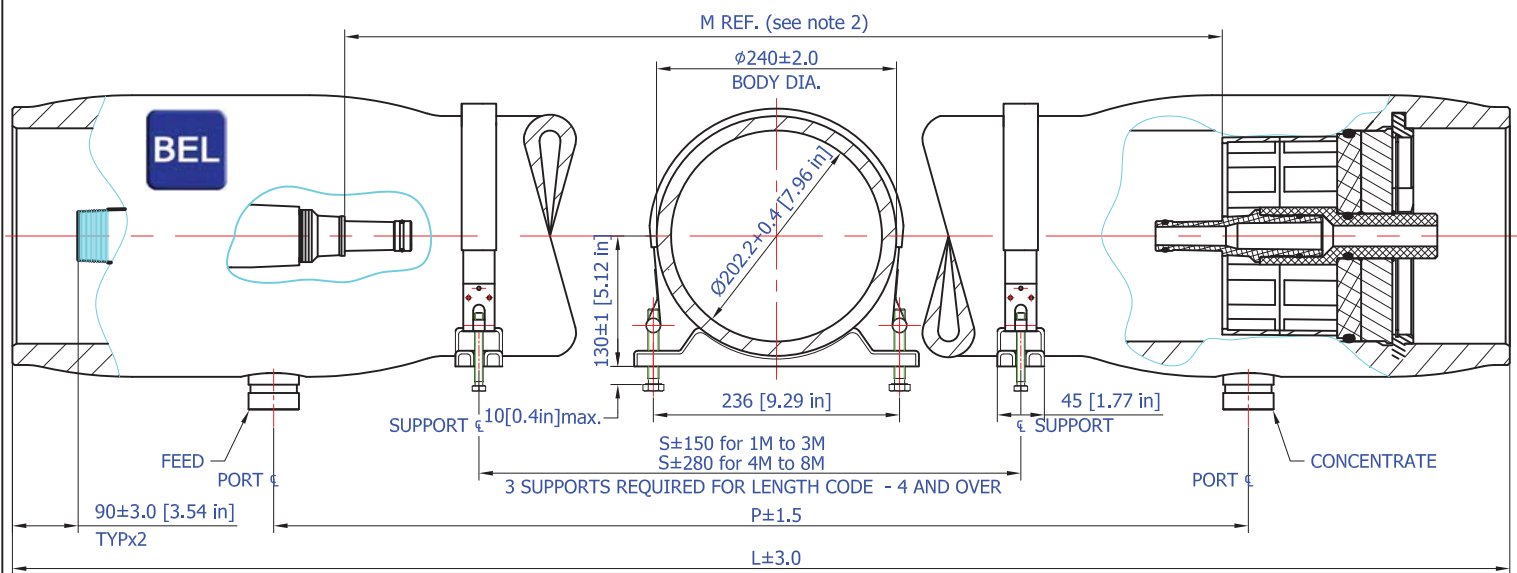
Item	Q-ty	Part Number	Description	Material
1	1	818000-0	Body of Pressure Vessel	Glass/Epoxy
2	2	040-155-1800	F/C port 1.5"	Super duplex
3	2	006-156-1806	Disk for sideport	Stainless steel
4	2	014-150-0506	Seal for sideport	EPDM
5	2	011-150-1803	Retaining ring for SP	Stainless steel
6	2	011-150-1202	Retaining ring for SP	Stainless steel
7	2	005-816-1800	Support ring	Stainless steel
8	2	011-801-1202	Retaining ring (finger hook)	Stainless steel
9	2	008-811-0125	Permeate port 1.25" BSP male	Engineering plastic
10	2	283772336	Retaining ring for permeate port	Stainless steel
11	2	003-861-1205	Base plate	Aluminum
12	2	013-800-1205	Sealing plate	Engineering plastic
13	2	007-080-0092	Seal for sealing plate	EPDM
14	2	283776342	Seal for permeate port	EPDM
15	2	285773918	Seal for adapter	EPDM
16	1	004-830-0150	Thrust ring	Engineering plastic
17	2	As required	Adapter	Engineering plastic
18	2-4	As required	Seal for adapter	EPDM
19	0-3	285779231	Disk spacer - 1mm	Engineering plastic
20	0-7	285779233	Disk spacer - 3mm	Engineering plastic
21	2	55410310	Strap Assy.	Stainless steel
22	2-3	55410351	Saddle	Engineering plastic

**BEL** TITLE: BEL8-S-1800 psi. (non code) RO PRESSURE VESSEL

DESIGN: DMG 21/03/2022  
 CHECK: JME 21/03/2022  
 APPR: MAF 21/03/2022

DRAWING NO: BEL8-S(1.5")-1800

THIS DRAWING IS PROPERTY OF BEL GROUP LIMITED IT IS STRICTLY FORBIDDEN TO USE, COPY, REPRODUCE OR DISCLOSE ANY PART OF IT TO THIRD PARTY WITHOUT WRITTEN AUTHORIZATION. REV.: 3



Notes:

1. All dimensions are for reference only, not for construction unless certified.
2. For membranes shimming (if needed) use disks spacers on feed side of the vessels.
3. Drawing unit: mm. (inches)
4. Saddles can be shimmed if required.
5. Do not scale drawing, may be reprinted on any paper size or copied.
6. The vessel is supplied with two strap assembly.
7. Ports with special height (H) in vessel and Length between ports (P) can be changed to adapt old dimension - with customer's special request.
8. Storage & installation: Indoor.
9. Vessel's Port diameters, according to ANSI Standards.

Membranes quantity	Length between ports, supports & internal space for membranes elements, mm./inch							
	1	2	3	4	5	6	7	8
P, port to port	1194	2210	3226	4242	5258	6274	7290	8306
	47	87	127	167	207	247	287	327
S, supports span	500	1500	2500	3250	4250	5250	6250	7250
	19.7	59.1	98.4	128	167.3	206.7	246.1	285.4
M, space of membranes	1032	2048	3064	4080	5096	6112	7128	8144
	40.6	80.6	120.6	160.6	200.6	240.6	280.6	320.6

B (Peak bell diameter), mm./inch		
Side port dia.	1.5"	2"
1800 (124.1)	298	308
	11,73	12,13

Membranes quantity	L (Length of pressure vessels), mm./inch							
	1	2	3	4	5	6	7	8
1800 (124.1)	1704	2720	3736	4752	5768	6784	7800	8816
	67.1	107.1	147.1	187.1	227.1	267.1	307.1	347.1

H (Height of side port), mm./inch		
Side port dia.	1.5"	2"
1800 (124.1)	192	192
	7,56	7,56

Warning.

1. Never pressurize a pressure vessel that was not loaded with membrane elements.
2. Wrong manifolding may cause an excessive load on port what can lead to leaks.
3. Max. allowable working pressure not to exceed 1800 psi. (124.1 bar).
4. Permeate internal pressure not to exceed 125 psi. (8.6 bar).
5. Operating temperature not to exceed 49°C (120°F).

This drawing is an integral part of the general statement of use and Technical Manual

	TITLE:	BEL 8" Side Port 1800 psi (non code) RO PRESSURE VESSEL	DESIGN	DMG	21/03/2022
	CHECK	JME	21/03/2022		
DRAWING NO.:	BEL8-S-PV-1800		APPR.	MAF	21/03/2022
THIS DRAWING IS PROPERTY OF BEL GROUP LIMITED IT IS STRICTLY FORBIDDEN TO USE, COPY, REPRODUCE OR DISCLOSE ANY PART OF IT TO THIRD PARTY WITHOUT WRITTEN AUTHORIZATION.					REV.: 3



**ORDER / R.F.Q. FORM - 8" SIDE PORT PRESSURE VESSELS**

*Please fill and send it to your contact at BEL*

**P.O. / R.F.Q. Number:**

**Customer name:**

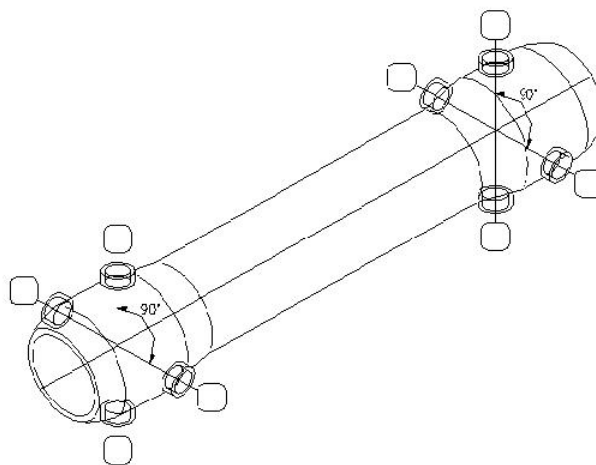
**1. NEW SYSTEM / EXISTING SYSTEM or Replacement , please provide details:**

**2. F/C PORTS CONFIGURATION:** Please indicate side port requirement on each side of the vessel  
(Mark the letter indicating port diameter in the box at each required port location)

**A – 1.5"**

**B – 2"**

*Vessel's Port diameters, according to ANSI Standards.*



**3. NUMBER OF VESSELS: Units**

*(Please use separate forms for each type in case of multi-type orders)*

**4. WORKING PRESSURE RATE (PSI):**1800

**5. NUMBER OF MEMBRANE ELEMENTS IN EACH VESSEL:** (1,,,,,,8)

**6. MEMBRANE BRAND AND TYPE:**

**7. CONFIRM TYPE:** BEL8-S - ( x ) - - M  
# of ports dia. of port pressure # of membranes - (Example: BEL8 - S(2 x 1.5") – 1,800 - 7M)

**8. PERMEATE PORTS OUTLET:** 1.25" BSP male

**9. ADAPTERS OPTIONS:** Two Standard adapters Standard & Solid (blind) adapter

**10. COLOR:** Standard (white, RAL 9010) Other RAL number: (contact for pricing)

Customer signature:

Date:

**FOR DETAILS PLEASE VISIT OUR WEBSITE: [www.belvessels.com](http://www.belvessels.com)**

May, 2020